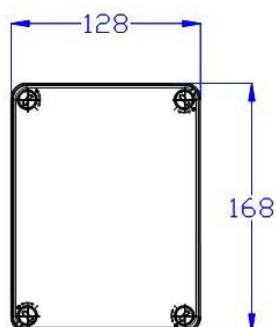
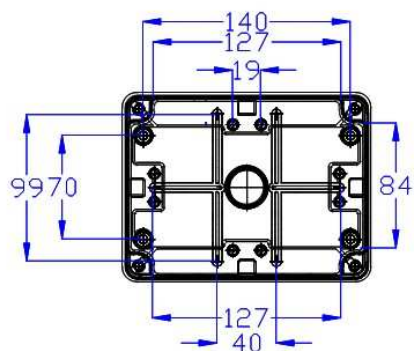
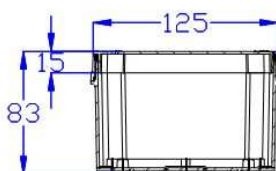
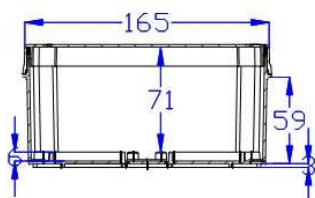


**GR17608**

*Specifiche Tecniche*

**IP66 SCATOLA STAGNA DA PARETE 155x110x70**

- REALIZZATO IN MATERIALE TECNOPOLIMERO ABS, DELLO SPESSORE CHE GARANTISCE MASSIMA ROBUSTEZZA E RESISTENZA IN OGNI PUNTO.
- TEMPERATURA D'INSTALLAZIONE -15 + 60°C
- RESISTENTE AL FUOCO FINO A 650 ° C GLOW WIRE TEST (CONFORMITÀ ALLA NORMA: EN60335-1: 94 + IEC 695-2-1)
- RESISTENZA AGLI URTI IK 08
- CHIUSURA 3/4 DI GIRO



# GR17608

## Technical Specifications

### IP66 BOX WITH SMOOTH WALLS 155x110x70

- MADE WITH THICK ABS TECHNOPOLYMER MATERIAL, ENSURING MAXIMUM STURDINESS AND STRENGTH
- WORKING TEMPERATURE  $-15 + 60^{\circ}\text{C}$
- HEAT RESISTANT UP TO  $650^{\circ}\text{C}$  GLOW WIRE TEST (IN COMPLIANCE WITH STANDARDS: EN60335-1:94 + IEC 695-2-1)
- SHOCK RESISTENCE IK 08
- 3/4 TURN CLOSURE

